


dyson

A close-up, profile shot of James Dyson, an older man with grey hair, wearing a white t-shirt. He is gesturing with his right hand, palm facing outwards, as if explaining something. The background is a soft, out-of-focus white.

Dyson is not a vacuum cleaner business. Dyson is a global technology company.

“Our mission is simple:  
We solve the problems  
others ignore.”

*James Dyson*

James Dyson  
Engineer and Founder

10%

longer battery life

30%

lighter

50%

slimmer

So, the question is – what is next for Wearables?

50+

colourway combinations

dyson  
ontrac





High capacity cells for **55 hours runtime**

Continuous **sound level monitoring** to help reduce negative health effects of noise pollution.

Continuous **environmental monitoring** to help avoid negative health effects of air pollution.

**Adjustable ANC** to suit user need on audio and surrounding noise. (post-launch OTA)

Dual microphone beam-forming. Cardioid sensitivity pattern helps **reject unwanted environmental noise during calls.**

Tested and engineered **for all-day comfort.** Custom foam shapes for both headband and ear cushions

Frequency response tuned to Dyson-derived curve for **accurate reproduction across range of human hearing.**

**User-configurable EQ** to tune frequency response to personal taste. (post-launch OTA)

**Less than 0.08% @ 1kHz Total Harmonic Distortion,**

**Market-leading ANC. Up to 40 dB cancellation.** 8 dedicated microphones for feed forward / backward ANC

**Inter-aural balance** to avoid sound 'smearing'.

**Weight reduction** for increased comfort. 440g

Noise reduction algorithms (crowd, and wind) to **emphasise spoken input during calls.**

**Customisable ear cushions and metal cups.** Your music, your way. 100s of combinations.

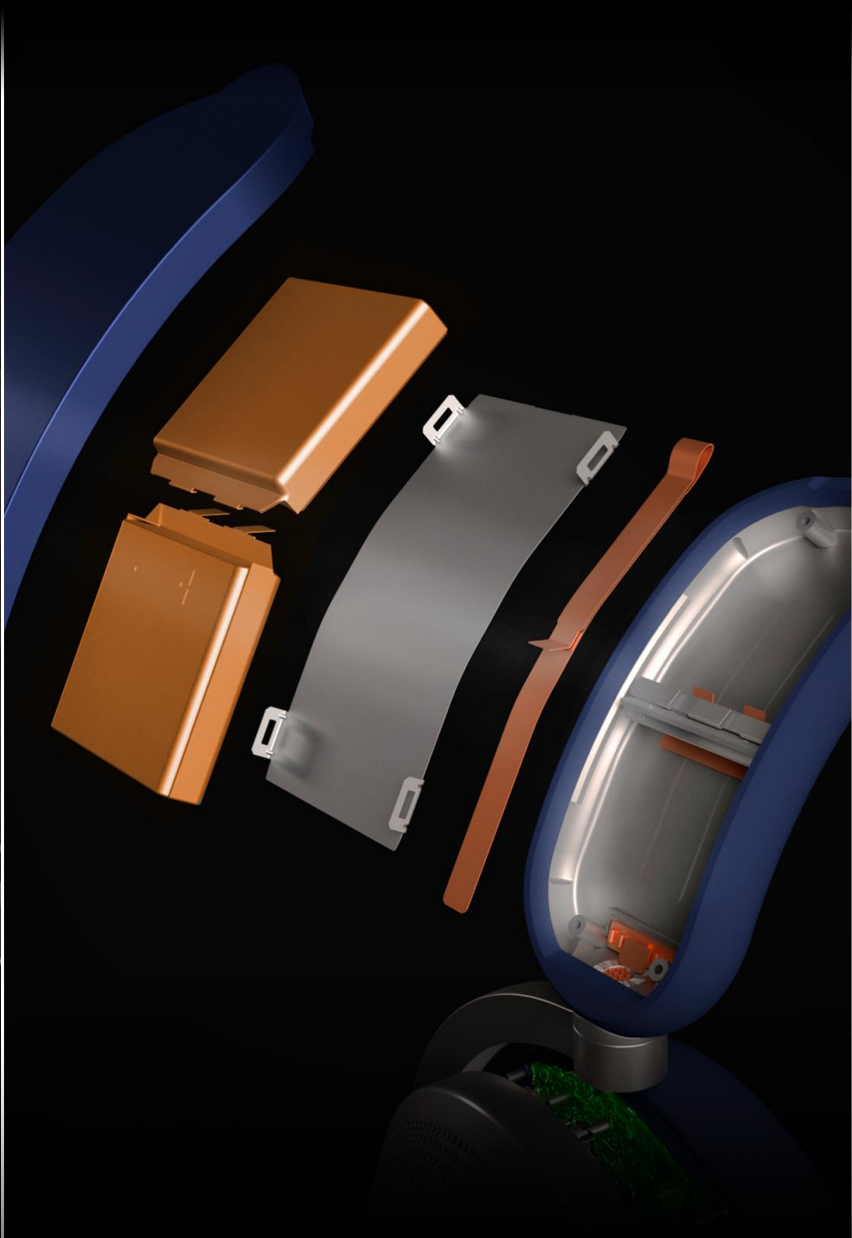




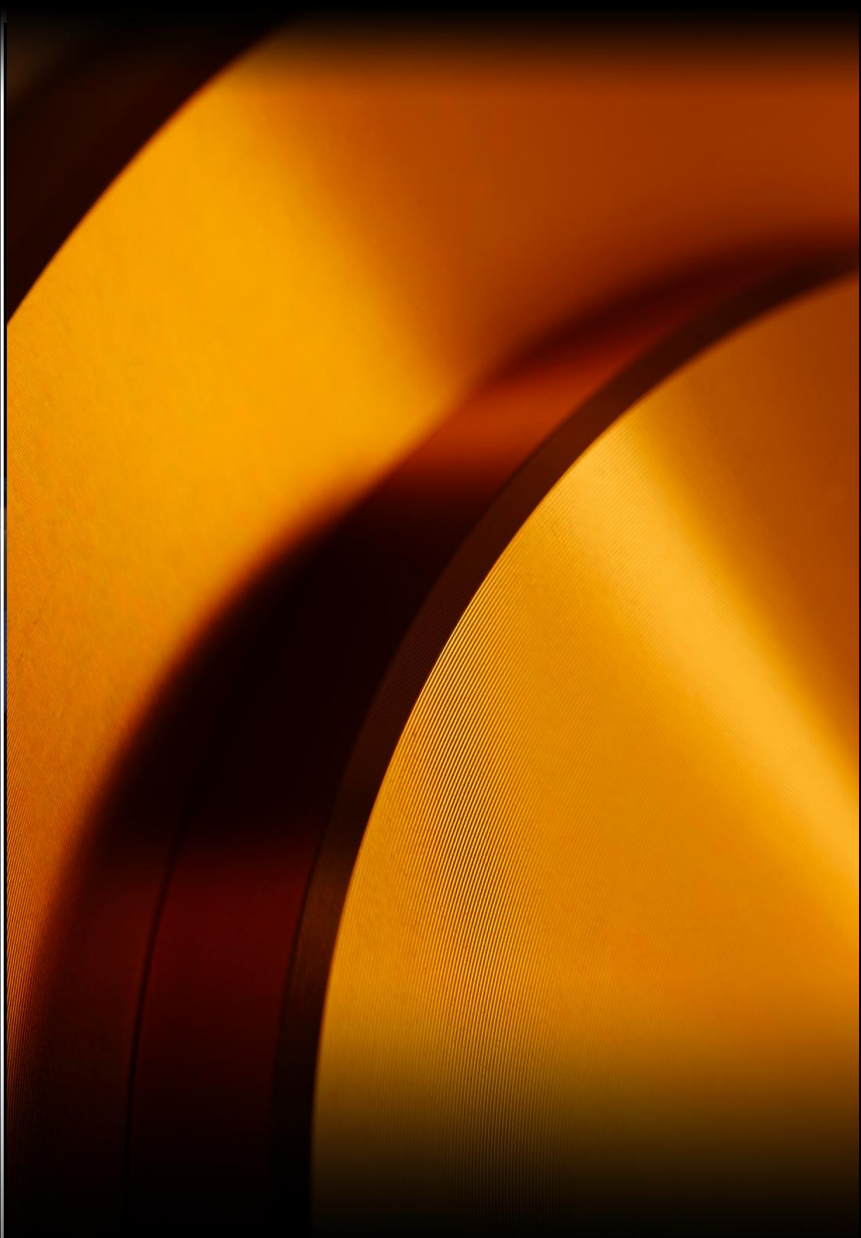


**Best-in-class noise-cancelling**  
Noise cancelled 380,000 times per second. Tracked and reported in real-time.

**Expanded sound range**  
Reveals hidden detail with deep sub-bass and high-end brilliance.

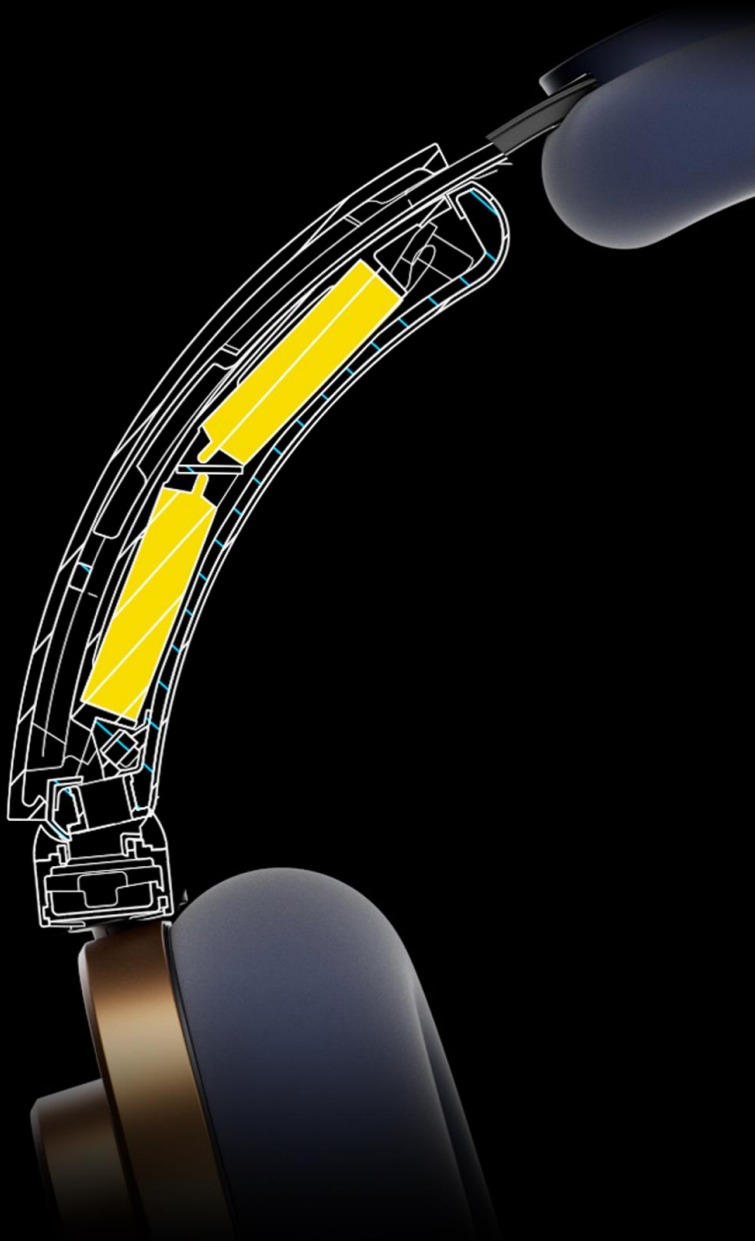


**55 hours listening time**  
1 charge for 2 weeks use.



**Interchangeable caps and cushions**  
Premium materials, high-end finishes and superior comfort.





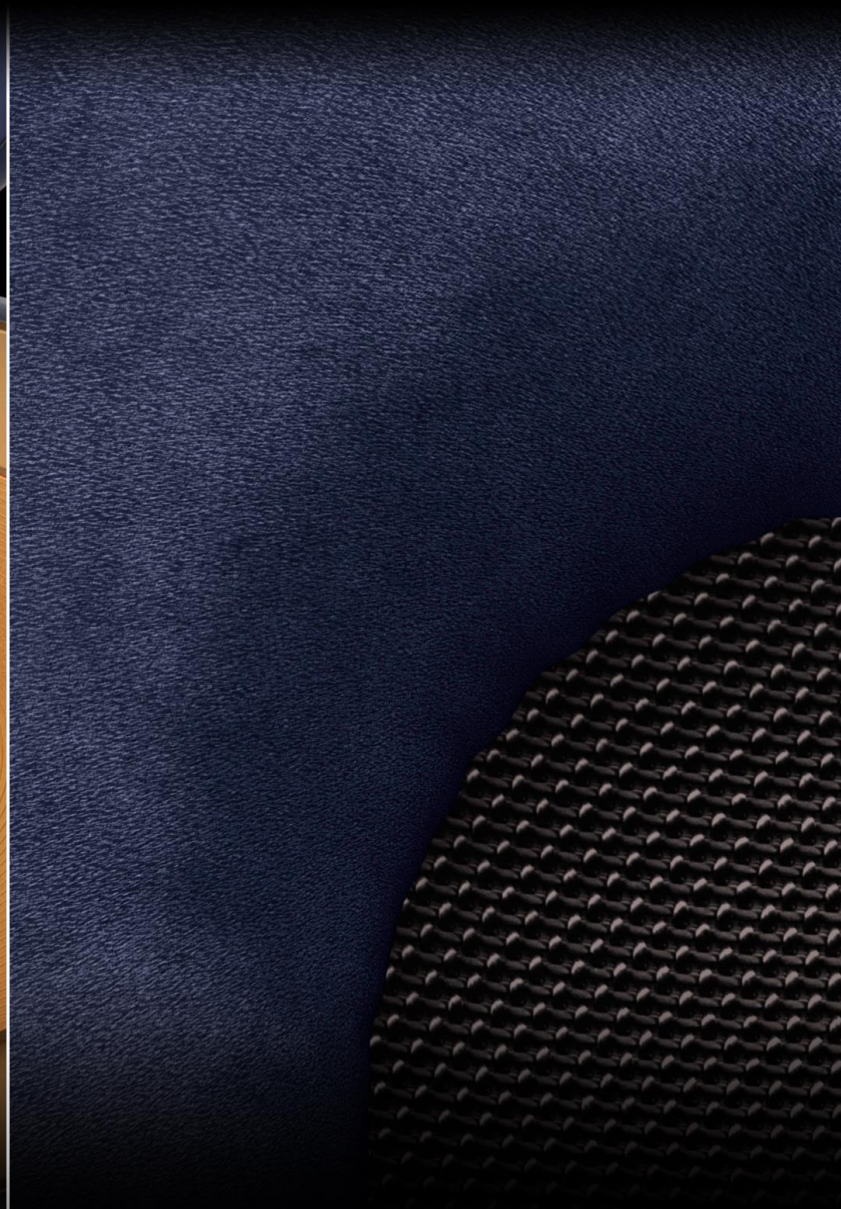
### Battery placement

Uniquely placed in the headband.  
Not hanging off your ears.



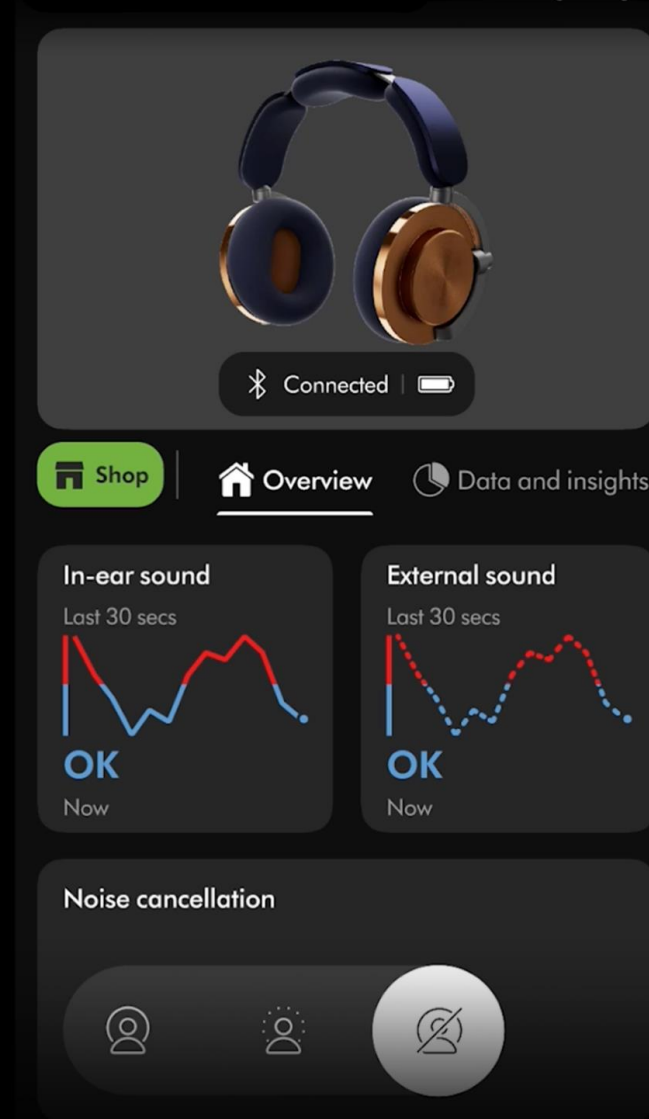
### Gimbal arms

Pivoting gimbal arm shifts the  
pressure point to the centre,  
alleviating pinching at the top  
of the ear.



### High-end materials

Acoustic foam moulds to form an  
acoustic seal on any head shape.  
Wrapped in a durable, breathable  
ultra-microfibre.



### Full connectivity

Real-time sound tracking for better  
hearing health. 100% connected  
with full product control.



# Industry-leading noise cancellation

Removes up to 40dB of annoying and distracting external noise. That's like the noise of a construction site being reduced to the whisper of a library. So you only hear the audio you want.

## 8 high-sensitivity microphones

4 in each ear cup detect external sounds 384,000 times a second, then isolate and remove unwanted noise before you hear it.

Double tap the headphones to cycle between:



### Isolation mode

Maximum noise cancellation.



### Awareness mode

Surrounding noise is amplified



### Off mode

Turns ANC off.





# Engineered to hear more detail

## Industry-leading noise cancellation

Removes up to 40dB of annoying and distracting external noise, so you only hear the audio you want.

### 8 intelligent microphone

4 in each ear cup detect external sounds 380,000 times a second, then isolate and remove unwanted noise.

3 feedback microphones inside the ear cups detect noise close to the ear.

### Dual beam-forming microphone

Ensures only your voice is heard against the wind or alongside a busy road.

1 feed forward microphones nearer the outer detect exterior noise.

## Expanded audio range

Reveals the deep **Sub-bass** and high-end **Brilliance** at both ends of the audio range.

### Targeted speaker housing

Tilted at 13° towards the ear.

### Multi-pivot gimbal arms

Creates an acoustic seal on any-shaped head and ear.

### Intelligent speaker driver

Produces more clarity at both ends of the audio range with unwanted distortion removed.

### Neodymium magnet

Permanent magnet that attracts and repels the voice coil, to resonate across an expanded sonic range.

### Voice coil

Rapidly switches polarisation, repelling and attracting to the neodymium magnet.

### Diaphragm

Attached to the voice coil. Beats against the air, up to 20,000 times a second, generating pressure waves in the air that we hear as sound.

### Digital amplifier

Eliminates distortion 48,000 times a second.

All controlled by a joystick

# High-capacity cell batteries. Up to 2 weeks listening on a single charge.

With newly created space for batteries,  
run-time is boosted to **55 hours**  
10 minutes charge for 2.5 hours  
30 minutes charge for 9.5 hours

## NEW

Long-lasting run time  
High capacity cells for up to  
**55 hours** run time with ANC

Dust and water resistant  
IP51 rating of higher so the 571H  
is prepared for real life use.

## 2 Lithium-ion batteries

High capacity-cell, weighing just  
30g. They have a long cycle life  
and are extremely safe  
– V0 rating – the highest safety  
rating a battery can achieve.

## Power-dense lithium ion pouch cells

The electrode in each cell is  
calendered for increased conductivity  
and then wrapped around itself,  
to create multiple, wafer-thin layers.  
They are vacuum-wrapped in an  
aluminium polymer pouch.

## Management System

Controls any thermal changes  
and manages the power draw  
to preserve the battery life.

## Housing

The cells fill nearly 100% of the available  
space, but in order to make the headband  
size adjustable, the cabling has to extend  
and contract with it. These have been carefully  
fitted into the base of the housing.

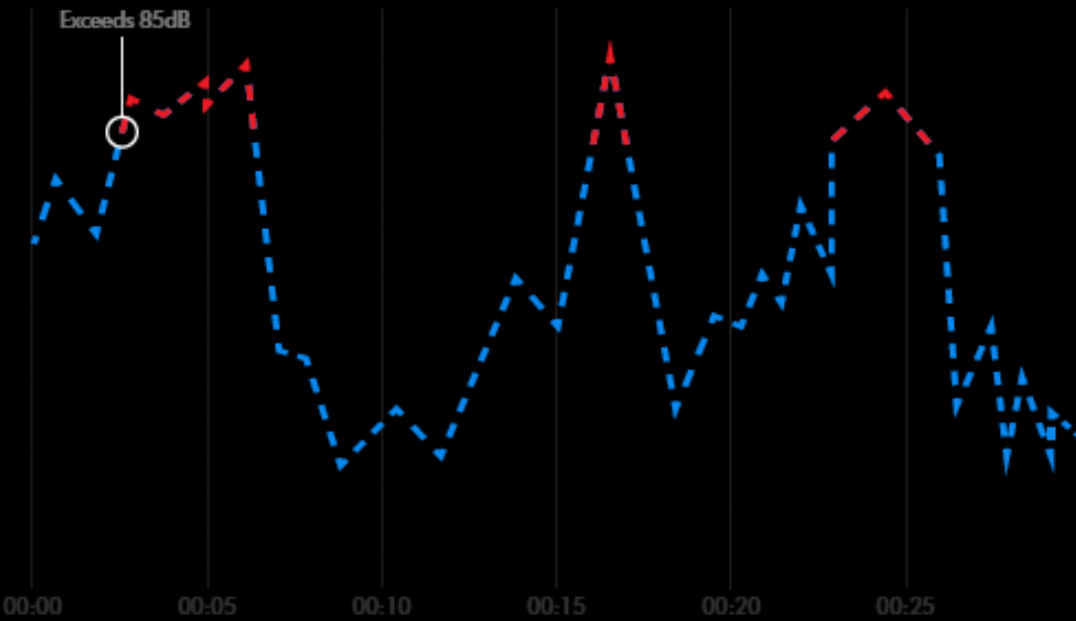


# Real-time sound tracking

Tracks and visualises external noise and in-ear volume. Displayed on the MyDyson App. Blocking out noise and constantly monitoring volume levels helps to protect the sensitive parts of your ears and reduces the harmful affects of prolonged noise exposure.

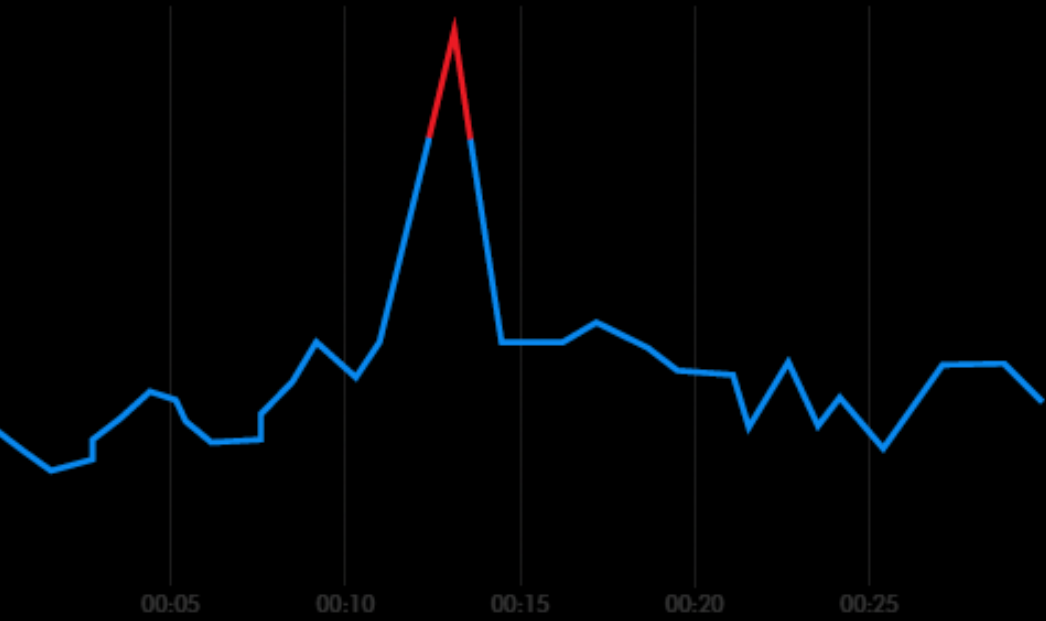
WHO guideline: If you are using an app to monitor your sound level, it is best to stay below 80dB average.

External noise



When external sounds exceed 85dB, such as city noises, sirens or dogs barking, the line appears red. Active noise cancelling can be enabled to reduce these harmful sounds.

In-ear volume



When sounds inside the ear cups exceeds 85dB, such as podcasts, music, work calls and any external sounds, line appears red. Turning on the noise limiter in settings, ensures safer listening volumes.



# MyDyson App Features

## Equaliser customisation

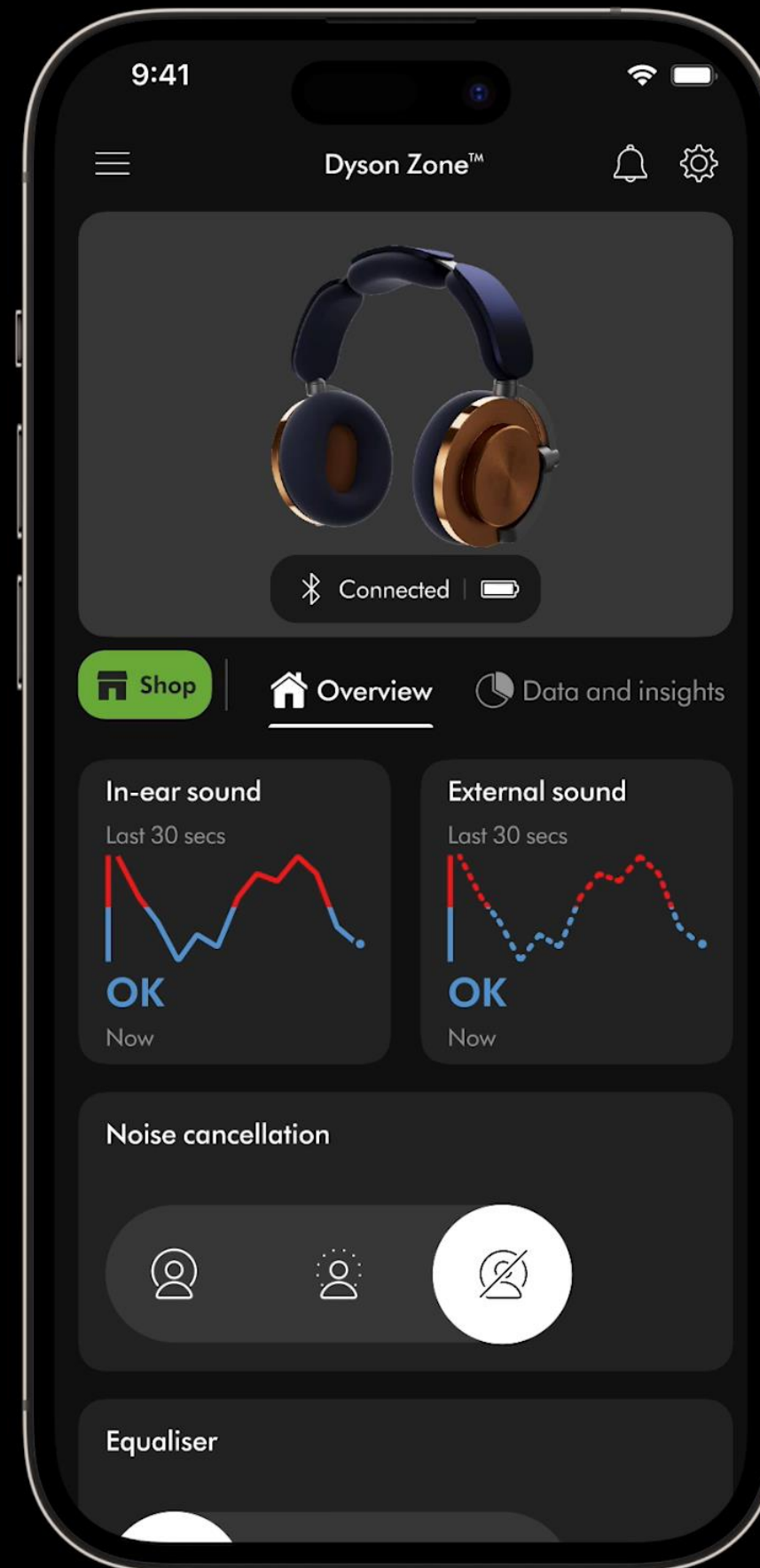
Equaliser customisation allows users to adjust the frequencies they hear to their taste.

## Faster Pair

CTKD connection journey - another way to shorten the connection journey – (NST investigating).

## Android fast pair

Quickly pairing Bluetooth devices when they come into proximity (571H only).



## Multiple ANC & transparency levels

Providing in-between levels so users can customise how much of the outside noise they let in.

## Ear health content

Content relating to ear health to show how the product could protect them.

## Air around me

Live NO<sub>2</sub> & VOC data giving a better view of air around you.



# Re-imagined format for ultimate comfort

**Batteries are suspended in the headband.  
Not hanging off your ears.**

Weight is evenly distributed across the headband, with only the central top cushion, plush and durable, touching your head. The two battery compartments either side simply float.



**Floating ear cups.  
Acoustically sealed without pinching.**

The rear-mounted pivoting gimbal arm shifts the pressure point to the centre, alleviating pinching from the top of the ear. An even acoustic seal is achieved on all ear and heads shapes whilst remaining comfortable.



# Meet Ontrac Colourways

September 24  
Add your presentation title here

DYSON DEPARTMENT  
Business function or author's name



SKU 1  
CNC Aluminum



SKU 2 – HERO  
CNC Copper



SKU 3  
Ceramic Cinnabar



SKU 4  
CNC Black Nickel



# Meet Ontrac

## Outer caps and cushions



Dark Iron



Oyster Pink



Chrome Yellow



Ultra Blue



Khaki



Prussian Blue



Cinnabar



CNC Black Nickel



Ceramic Blue



CNC Copper



CNC Aluminum



Ceramic Cinnabar



Ceramic Khaki



Coarse Titanium

# Create your own combination and signature style

50+ color combinations from 4 headphones , 7 interchangeable outer caps & ear cushions

September 24  
Add your presentation title here

DYSON DEPARTMENT  
Business function or author's name









dyson

